



Figure Out Your Floor

If that new walk-in you've decided to purchase requires a floor, you should read this. [More...](#)

Web2Walk-In Now Apple iOS Compatible

Master-Bilt's Web2Walk-In software, built into the Master Controller Reverse Cycle Defrost system, can now be used on Apple devices as well as Android. [More...](#)

New Defrost Mode Covers All The Ins And Outs

Speaking of Web2Walk-In...The latest version of the software has a defrost cycle feature that easily eliminates frost build-up on evaporator coils. [More...](#)

Partners In Success:

Virginia's Piedmont Geriatric Hospital kitchen renovation becomes a model for success. [More...](#)

Best In Class 2nd Year in a Row



Master-Bilt was recently recognized for excellence by Foodservice Equipment & Supplies (FE&S) magazine's 2013 Best in Class study for a second consecutive year. FE&S asked foodservice dealers, consultants and multi-unit operators to rate individual manufacturers on a list of specific attributes. Master-Bilt received the top ranking for **Walk-In Refrigeration in the Operators' category** in both 2012 and 2013.



[Save The Date!](#)

Quarterly Quote:

"Every child is an artist. The problem is staying an artist when you grow up."

—Pablo Picasso



Figure Out Your Floor

So you've made the decision to purchase a new walk-in cooler or freezer for your business. You've settled on the right size, finalized the options you need and determined the most efficient refrigeration system. But have you thought about the floor? If you require a floor other than existing concrete, some extra consideration is in order.

Besides the door, the walk-in floor catches the most day-to-day abuse. Picking a floor that isn't durable enough may result in delamination, or "peeling," of the surface metal, especially if you're planning on using heavy-loaded carts or shelving inside.



Heavy cart traffic or shelving can result in floor delamination.

To be sure you are specifying the right floor, consider the weight and frequency of traffic going into and out of the walk-in. Depending on your situation, you may need a reinforced floor or even a structural floor. Master-Bilt offers several options to fit your needs:

- **Standard Floor:** Master-Bilt's standard floor supports 700 pounds per square foot in an evenly distributed stationary load. This floor is good in most cases except where pallet jacks and other heavy carts will be used. It also features a textured .080 inch thick aluminum surface which helps reduce slip-and-fall traffic.



Master-Bilt's standard floor texture is easily cleaned and meets NSF guidelines.

February 2014 Articles:

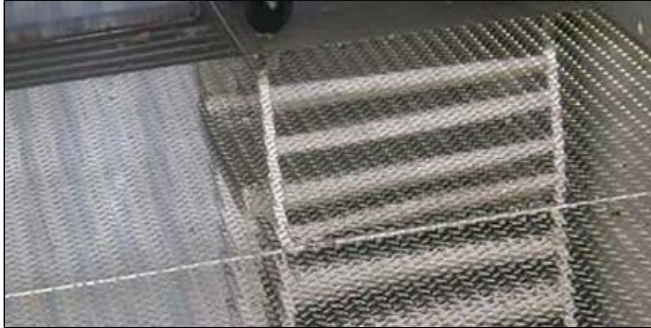
Figure Out Your Floor

Web2Walk-In Now Apple iOS Compatible

New Defrost Mode Covers All The Ins And Outs

Partners In Success

- **Floors With Overlays:** When the load exceeds the standard floor limit, an aluminum or steel diamond treadplate overlay is an option. These plates, available in thicknesses of 1/8", 3/16" or 1/4", are installed with self-tapping screws over the existing floor. Keep in mind that treadplate overlays are subject to acceptance by local codes.



Floor treadplate overlays are available in a variety of thicknesses.

- **Heavy-Duty Floors:** For added rigidity and support, pick a heavy-duty floor with a layer of foamed-in-place 3/4" thick plywood to help distribute the weight of wheeled traffic.
- **Structural Floors:** These floors offer the most reinforcement and are designed to withstand a pallet jack (or equivalent transporter) with an evenly distributed load of 5000 lbs. over all four wheels. Construction consists of a combination of marine plywood, structural underlayment and a 1/8" thick diamond tread finish for maximum strength.



Structural floors offer the maximum support.

One last thing to consider with floors is ramps. An interior or exterior floor ramp makes for easier access especially when using carts or dollies. Master-Bilt supplies ramps to match each type of floor.



Ramp choices include exterior (left) or interior.



Refrigeration News & Product Information
Published Quarterly

February 2014



Web2Walk-In Now Apple iOS Compatible



Since its debut, Master-Bilt's Web2Walk-in software has offered complete 24/7 control of Master Controller functions from any computer or Android-based smartphone. Now, the latest version, already released to the field, is compatible with Apple's iOS system. Web2Walk-in can now be accessed from any device with an internet connection, including PC, Mac, smartphone, or tablet.

The Web2Walk-In software loaded on each controller allows you to remotely monitor and program all data and setpoints using any device with a wireless internet or cabled (cat 5) connection (internet connection not required for controller operation). With Web2Walk-In, there's no need for a service tech to climb onto a roof or enter the walk-in to monitor or adjust the refrigeration system. Plus, constant access to data allows users to improve refrigeration system performance and avoid service issues.

February 2014 Articles:

Figure Out Your Floor

Web2Walk-In Now Apple iOS Compatible

New Defrost Mode Covers All The Ins And Outs

Partners In Success



New Defrost Mode Covers All The Ins And Outs

It's a fact of life that in most busy foodservice areas, walk-in freezer doors will be opened and closed a lot. Frequently, with all the extra opening and closing, warm air from outside the walk-in meets the cold air inside and forms moisture which can freeze on the evaporator fan guards. This ice formation blocks the cold airflow from the coil fans resulting in inefficient cooling and the possibility of food spoilage.

The Master Controller Reverse Cycle Defrost (MCRCD) option offers a simple, yet effective, solution. A new defrost cycle selection built into the Master Controller's Web2Walk-in software turns on the evaporator fans for a short time when the coil is warm to melt accumulated frost and ice from the fan guards. To turn on this feature, the user should go to the "defrost fan state" menu and pick "cycle." This new function may be accessed through the control panel located on the evaporator coil or through the Web2Walk-in set points screen on any computer, tablet or smart phone.



Access the new defrost mode by going to "defrost fan state" and picking "cycle" (click image to enlarge).

This defrost feature is included on new MCRCD systems and the new version of the Web2Walk-in software can be downloaded to MCRCD 2.0 systems in the field. Ask your Master-Bilt representative for more information or call us at 800-647-1284.

February 2014 Articles:

[Figure Out Your Floor](#)

[Web2Walk-In Now Apple iOS Compatible](#)

[New Defrost Mode Covers All The Ins And Outs](#)

[Partners In Success](#)



PARTNERS IN SUCCESS:

Piedmont Geriatric Hospital Burkeville, VA

Piedmont Geriatric Hospital (PGH) is the only geropsychiatric hospital operated by the Virginia Department of Behavioral Health and Developmental Services (DBHDS). The facility serves approximately 350 meals a day and, for the last several years, all food was brought in from another agency. Last year, however, the hospital decided to renovate and reopen the kitchen to better serve its patients.

To accomplish the task, Mickie Jones, Deputy Director of A&E services for DBHDS, assembled a team that included Lawrence J. Huber, CFSP, FCSI, Principal at Foodservice Consultant Studio, Steve Carson of Carson Malliton Associates, Inc., Rod Gainsforth of Ashland Equipment and Sam Waldren of United Refrigeration. Amazingly, in less than a year, the team planned the entire renovation, gutted the old kitchen and installed the new one.

In the initial stages of design, the team became interested in the benefits of a glycol cooling system and chose a Master-Bilt's GPS series glycol parallel rack system, in part because it offered more temperature flexibility than a conventional system. The staff needed a system that maintained lower temperatures of 28 to 32°F and they also had to be able to monitor the system at all times. "The glycol system is easier to operate at a lower temperature," says Larry Huber, "which was important for this project. It was a perfect fit."

The new kitchen uses three new Master-Bilt walk in coolers as well as two refurbished walk-ins that are all run from the new Master-Bilt GPS system. In the dock area, two refurbished walk-ins from the old kitchen receive all food deliveries. The hallway leads to the food bank where a large new Master-Bilt walk-in serves as the hospital's main food bank, storing up to two weeks' worth of meals. Adjacent to the main food prep area, two additional walk-ins are used for holding and serving plated meals. The kitchen operates under a "don't wait – anticipate" system using the multiple walk-ins as back up for any of the three functions in case of an emergency.

In addition to providing accurate temperature data, the monitoring system installed on the GPS system also alerts staff when there is a potential maintenance issue before it becomes a problem. For example, if a compressor begins to fail the monitoring system alerts the staff immediately giving them time to get a replacement part before a breakdown and the equipment continues to work without interruption.

The project has been a resounding success and Piedmont is now being offered as a model for other facilities in the department that are planning kitchens. "We make everything fresh ourselves now," says Mickie, "our entrees are still delivered refrigerated but we prepare all the fresh foods items here."

February 2014 Articles:

[Figure Out Your Floor](#)

[Web2Walk-In Now Apple iOS Compatible](#)

[New Defrost Mode Covers All The Ins And Outs](#)

[Partners In Success](#)

[Visit the Cool It Archive](#)

[Like the new *Cool It* format?](#)

[Any suggestions for improvement?](#)

[Click here to take survey.](#)



908 Highway 15 North • New Albany, MS 38659
800-647-1284 • sales@master-bilt.com



A Standex International Corporation Company · ©2014, Master-Bilt. All Rights Reserved

To be removed from future Master-Bilt promotional emails such as this one, please reply to this email and type "unsubscribe" in the subject line.