



BLG-HGPR SERIES

Bottom Mounted
 Full-Height Swing Glass Door
 Freezer Merchandisers With
 Remote Refrigeration Systems

MODELS

- BLG-48-HGPR
- BLG-74-HGPR

BLG-74-HGPR

FEATURES

New Glass Door Features:

- Most energy efficient freezer door in the industry – zero heat
- Advanced insulated glass pack construction offers humidity protection up to 74% RH*
- Anti-fog coating means doors are always clear, even during openings and heavy use
- Increased reliability by eliminating electrical components

*Based on lab testing at 75°F ambient temperature and -10°F case temperature

- Standard finishes: White interior/white exterior or black exterior/black interior
- Stainless steel floor
- 1³/₄" thick state-of-the-art, foamed-in-place "zero ODP" polyurethane insulation provides high R-value
- Adjustable legs for leveling
- Four adjustable heavy-duty epoxy-coated cantilever shelves with price tag molding per door
- Merchandiser profile matches other BLG/BMG Plus refrigerator and freezer models

- Top mounted, low profile interior evaporator housing
- Automatic condensate removal
- Low ambient controls and hood
- Pre-charged with R-448A/R-449A refrigerant
- Temperature range: 5° to -15°F (-18° to -26°C)

WARRANTY

- One year limited parts and labor warranty
- With optional quick connect line set: Two year limited parts and labor

CONSTRUCTION

- Standard interior double row LED lighting
- Standard programmable electronic controller featuring:
 - Audible and visual alarm
 - Eliminates room thermostat, defrost termination/fan delay control, defrost timer and digital thermometer or other temperature indicator
- 24 gauge painted textured galvanized steel interior and exterior

DOORS

- Full-height doors
- Auto-close
- Triple pane glass
- 90° hold-open feature
- Contemporary style door frame and handles
- Heavy-duty universal workflow handles
- Easily replaceable snap-in magnetic vinyl door gaskets

REFRIGERATION

- Matched remote refrigeration system
- Expansion valve system for faster door opening recovery time

OPTIONS

- Stainless steel interior and/or exterior
- Custom exterior colors
- Additional shelving
- Flat bottom shelf with legs
- Bottom baskets
- Casters
- 50' quick connect line set
- 3 phase electrical
- Leg kits
- Door locks
- Proximity switches



BLG-HGPR SERIES

BOTTOM MOUNTED FULL-HEIGHT SWING GLASS DOOR FREEZER MERCHANDISERS WITH REMOTE REFRIGERATION SYSTEMS

TECHNICAL SPECIFICATIONS

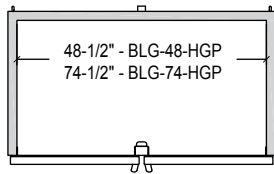
CABINET

MODEL	DIMENSIONS (in.)			DIMENSIONS (mm)			CONDENSING UNIT**	VOLTS	AMPS		NO. OF DOORS	WEIGHT CAP. PER SHELF (LB/KG)	CAP. CU. FT.	SHIP WT. (LB/KG)
	L	D*	H	L	D	H			MCA	MOP				
BLG-48HGPR	52	32 ¹ / ₄	79	1321	819	2007	MSLD015EB	208-230/60/1	19	20	2	92/42	45.7	575/261
							MSLD015EC	208-230/60/3	15	20				
BLG-74HGPR	78	32 ¹ / ₄	79	1981	819	2007	MSLD020EB	208-230/60/1	25	30	3	92/42 (ends), 105/48 (center)	70.2	770/350
							MSLD020EC	208-230/60/3	19	20				

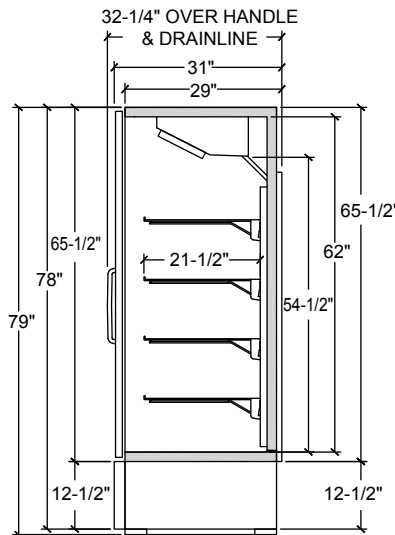
*Includes door handle and rear drainline cover. **"B" suffix denotes 1-phase, "C" denotes 3-phase.

CONDENSING UNITS

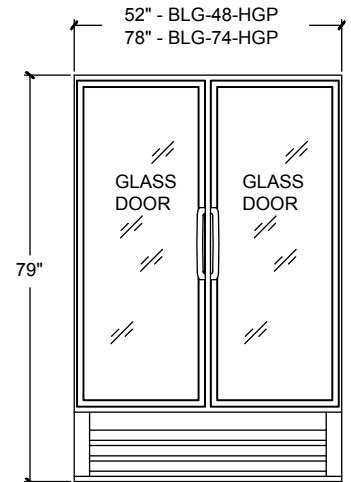
MODEL	DIMENSIONS (in.)			DIMENSIONS (mm)			UNIT H.P.	VOLTS	MCA	MOP	RLA	LRA	SHIP WT. (LB/KG)
	L	D	H	L	D	H							
MSLD010EB	22	27	18	559	686	457	1	208-230/60/1	12.5	15	6.1	42.3	180/82
MSLD010EC	22	27	18	559	686	457	1	208-230/60/3	9.1	15	4.1	31.7	180/82
MSLD015EB	22	27	18	559	686	457	1.25	208-230/60/1	18.8	20	7.4	40.3	180/82
MSLD015EC	22	27	18	559	686	457	1.25	208-230/60/3	15.3	20	6.6	55.4	180/82
MSLD020EB	38	27	18	559	686	457	2	208-230/60/1	25	30	13.6	61.0	240/109
MSLD020EC	38	27	18	559	686	457	2	208-230/60/3	18.8	20	8.3	55.0	240/109



PLAN VIEW



SIDE VIEW



ELEVATION VIEW

LISTINGS



- Listed under NSF-7 for the storage and/or display of packaged food
- Meets Federal DOE Requirements
- Meets Canadian energy efficiency regulations

HOOKUP

Cabinet: Hardwire with 115/60/1.
Condensing Unit: 208-230/60/1

NOTE: Cabinet designed for optimum performance in air-conditioned area at 75°F ambient and 55% relative humidity. All specifications subject to change without notice.



908 Highway 15 North • New Albany, MS 38652
PHONE: 800-647-1284 or 662-534-9061 • FAX: 800-232-3966 or 662-534-6049 • www.master-bilt.com

