



MBBC80



MBBC SERIES

Deep Well Horizontal Bottle Coolers

MODELS

- MBBC50
- MBBC65
- MBBC80
- MBBC95

FEATURES

CONSTRUCTION

- Stainless steel top
- Black finish on front, sides and back
- Galvanized steel interior walls, stainless steel floor with drain
- Stainless steel lids
- Standard removable cap catcher
- Integrated glass rail on rear top
- Easy glide sliding lids with locks
- Door openings have plastic breaker strips to reduce condensation
- Adjustable dividers
- Adjustable temperature control
- Foamed-in-place with low ODP polyurethane insulation
- Wall thickness: 1 1/2"

REFRIGERATION

- Self-contained refrigeration system metered by capillary tube
- Front breathing compressor on right side
- Evaporator coils are mounted to back wall and are epoxy-coated to resist corrosion
- Evaporator coils feature multiple fan motors and blades for greater air flow
- Automatic defrost
- Condensate evaporator inside compressor housing
- Access to slide-out condensing unit behind front grille for easy cleaning and service

- Refrigerant: R290
- Temperature range: 34° to 38°F (1° to 3°C)

WARRANTY

- **Standard limited three year parts and labor**
- **Additional two year coverage on compressor part**

OPTIONS

- 4" plate casters

BID SPECIFICATIONS

Item no. MBBC_____. Provide _____ Deep Well Horizontal Bottle Cooler(s), Master-Bilt® model no. MBBC_____.

Bottle coolers will feature stainless steel top and black front, sides and back. Interior walls will be galvanized steel with stainless steel floor. Lids will be constructed of stainless steel and will be equipped with

locks. Door openings will have plastic breaker strips to reduce condensation. Adjustable dividers will also be standard.

The refrigeration system will be self-contained and use R290 refrigerant. The temperature range will be 34° to 38°F (1° to 3°C). System will be equipped with coated evaporator coils and a condensate

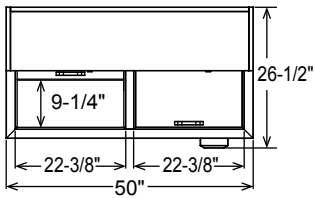
evaporator. Condensing unit will be slide-out type for easy cleaning and service.

Bottle cooler to have standard limited 3-year parts and labor warranty with additional 2-year on compressor part.

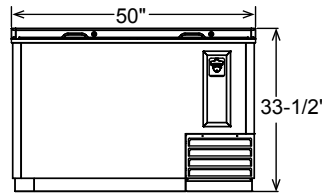
Bottle cooler to be UL, C-UL and ETL Sanitation listed.

TECHNICAL SPECIFICATIONS

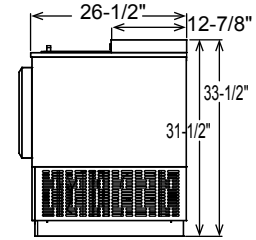
MODEL	DIMENSIONS (in.)			DIMENSIONS (mm)			VOLTS	AMPS	UNIT H.P.	NO. OF DIVIDERS	NO. OF LIDS	CAPACITY 12 OZ. CANS/ 12 OZ. BOTTLES	SHIP CU. FT.	SHIP WT. (LB/KG)
	L	D	H	L	D	H								
MBBC50	50	26 1/2	33 1/2	1270	673	851	115	3.5	3/8	3	2	857/377	37.0	214/97
MBBC65	64 1/2	26 1/2	33 1/2	1638	673	851	115	3.5	3/8	4	2	1191/539	47.0	251/114
MBBC80	80 1/2	26 1/2	33 1/2	2045	673	851	115	3.5	3/8	5	3	1575/715	58.0	298/135
MBBC95	95	26 1/2	33 1/2	2413	673	851	115	3.5	3/8	6	3	1893/877	68.0	335/152



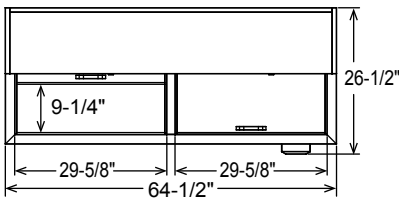
MBBC50 PLAN VIEW



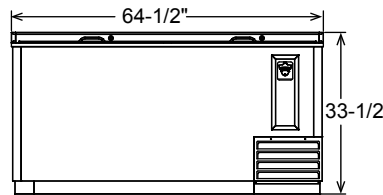
MBBC50 ELEVATION VIEW



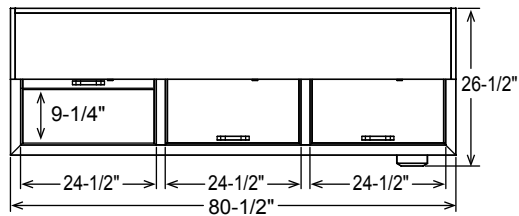
ALL MODELS SIDE VIEW



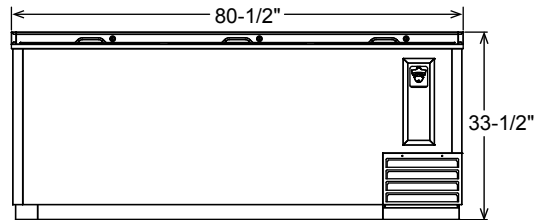
MBBC65 PLAN VIEW



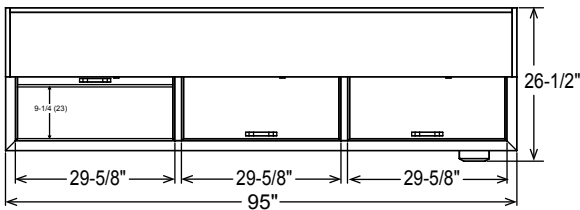
MBBC65 ELEVATION VIEW



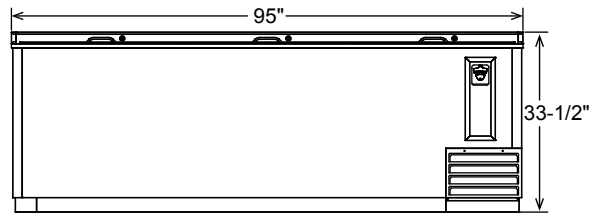
MBBC80 PLAN VIEW



MBBC80 ELEVATION VIEW



MBBC95 PLAN VIEW



MBBC95 ELEVATION VIEW

LISTINGS



HOOKUP

All models via plug in, 8 foot long flexible three wire 16 gauge cord with molded plug.



NEMA 5-15P

NOTE: Cabinet designed for optimum performance in air-conditioned area at 75°F ambient and 55% relative humidity. All specifications subject to change without notice.