



MBU SERIES

Undercounter/Worktable Refrigerators & Freezers

MBUF/MBUR60



REFRIGERATORS

- MBUR27
- MBUR36
- MBUR48
- MBUR60
- MBUR72

FREEZERS

- MBUF27
- MBUF48
- MBUF60

FEATURES

CONSTRUCTION

- Stainless steel interior and exterior
- Foamed-in-place with low ODP polyurethane insulation
- Wall thickness: 2"
- 6" overall height casters
- Adjustable heavy-duty shelves, one per door

DOORS

- Self-closing with heavy-duty recessed pocket handle
- Standard door swing configuration:
 - 1-door models hinged right
 - 2-door models.....left hinged left, right hinged right
 - 3-door model.....left hinged left, middle door hinged left, right door hinged right
- Field reversible doors on MBUR27 & MBUF27 models

Door width:

- MBUR/MBUF27 27³/₈"
- MBUR36..... 18"
- MBUR/MBUF48.....24"
- MBUR/MBUF60..... 30"
- MBUR72.....24"

REFRIGERATION

- Self-contained forced air capillary tube refrigeration system
- Refrigerant: R290
- Temperature range:
 - MBUR.....34° to 38°F (1° to 3°C)
 - MBUF..... -10° to 0°F (-23° to -17°C)

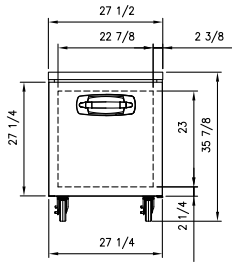
WARRANTY

- **Standard limited three year parts and labor**
- **Additional two year coverage on compressor part**

OPTIONS

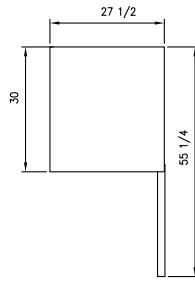
- Additional shelves
- 4" casters in lieu of 6" casters (shipped loose)
- 6" legs in lieu of casters (shipped loose)
- Single or double overshelf

REFRIGERATORS

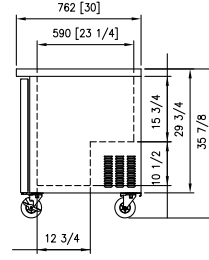


MBUR27

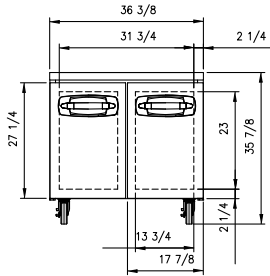
FRONT VIEW



TOP VIEW

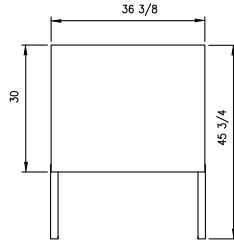


ALL MODELS
SIDE VIEW

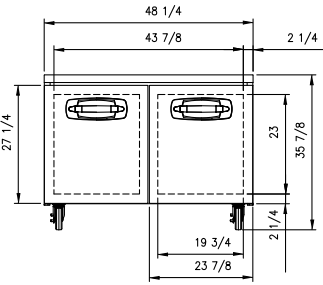


MBUR36

FRONT VIEW

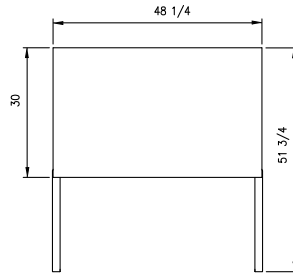


TOP VIEW

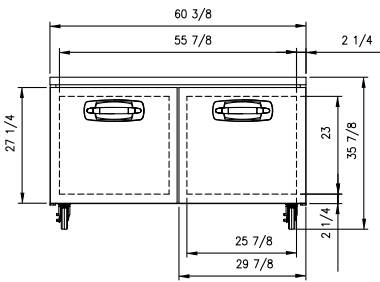


MBUR48

FRONT VIEW

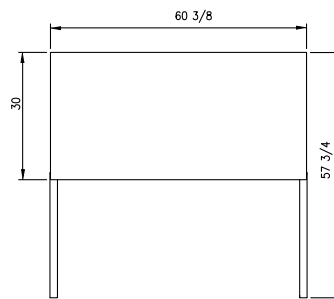


TOP VIEW

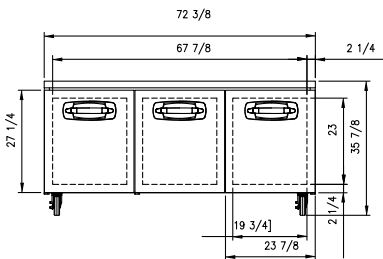


MBUR60

FRONT VIEW

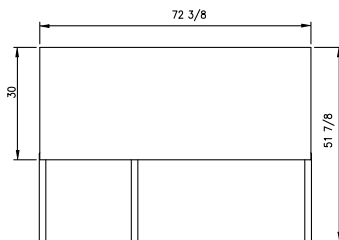


TOP VIEW



MBUR72

FRONT VIEW



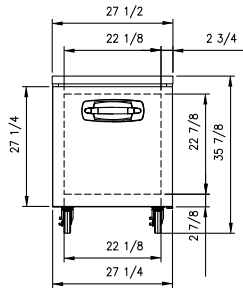
TOP VIEW

SPECIFICATIONS

Models	MBUR27	MBUR36	MBUR48	MBUR60	MBUR72
Crated Weight (lbs) (kg)	143 (65)	181 (82)	227 (103)	254 (115)	295 (134)
Crated Height (in) (mm)	36 (914)	36 (914)	36 (914)	36 (914)	36 (914)
Crated Width (in) (mm)	30-1/8 (765)	38 (965)	51-1/4 (1302)	63 (1600)	74-3/8 (1889)
Crated Depth (in) (mm)	33-1/2 (851)	33-1/2 (851)	33-1/2 (851)	33-1/2 (851)	33-1/2 (851)
Interior Height (in) (mm)	26-1/4 (667)	26-1/4 (667)	26-1/4 (667)	26-1/4 (667)	26-1/4 (667)
Interior Width (in) (mm)	23-5/8 (600)	32-1/2 (826)	44-5/8 (1133)	56-5/8 (1438)	68-5/8 (1743)
Interior Depth (in) (mm)	22 (559)	22 (559)	22 (559)	22 (559)	22 (559)
Overall Height (in) (mm)	35-7/8 (911)	35-7/8 (911)	35-7/8 (911)	35-7/8 (911)	35-7/8 (911)
Overall Width (in) (mm)	27-1/2 (699)	36-3/8 (924)	48-1/4 (1226)	60-3/8 (1534)	72-3/8 (1838)
Overall Depth (in) (mm)	30 (762)	30 (762)	30 (762)	30 (762)	30 (762)
Gross Cubage (CuFt) (L)	6.7 (190)	9.1 (258)	12.5 (354)	15.9 (450)	19.2 (543)
Number of Shelves	1	2	2	2	3
Shelf Area (SqFt) (Sqm)	3.6 (0.33)	5 (0.46)	6.8 (0.63)	8.6 (0.80)	10.5 (0.93)
Number of Casters	4	4	4	4	4
Condensing Unit Size	1/5 HP	1/5 HP	1/5 HP	1/5 HP	1/5 HP
Refrigerant	R290	R290	R290	R290	R290
Electrical Characteristics	115/60/1	115/60/1	115/60/1	115/60/1	115/60/1
Cord and Plug Furnished	Yes	Yes	Yes	Yes	Yes
NEMA Plug Configuration	5-15P	5-15P	5-15P	5-15P	5-15P
Total Amp Draw	3.5	3.5	3.5	3.5	3.5

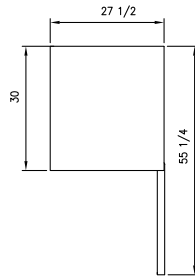
Specifications subject to change without notice.

FREEZERS

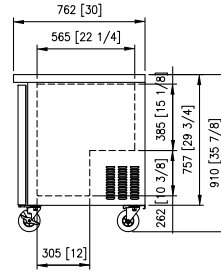


FRONT VIEW

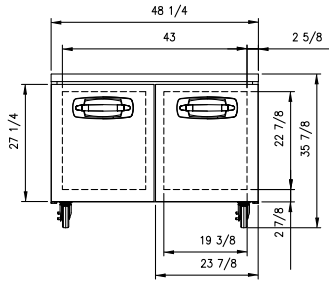
MBUF27



TOP VIEW

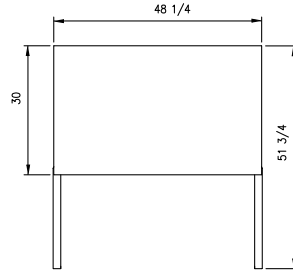


ALL MODELS
SIDE VIEW

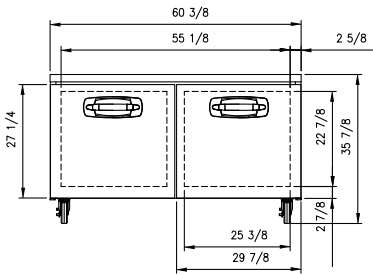


FRONT VIEW

MBUF48

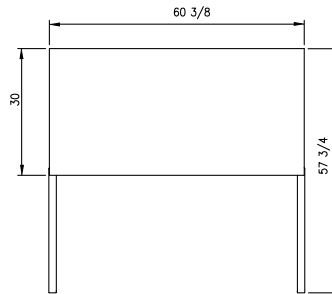


TOP VIEW



FRONT VIEW

MBUF60



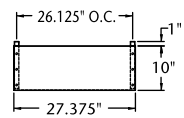
TOP VIEW

SPECIFICATIONS

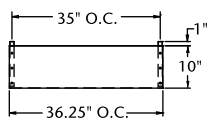
Models	MBUF27	MBUF48	MBUF60
Crated Weight (lbs) (kg)	152 (69)	238 (108)	276 (125)
Crated Height (in) (mm)	36 (914)	36 (914)	36 (914)
Crated Width (in) (mm)	30-1/8 (765)	51-1/4 (1302)	63 (1600)
Crated Depth (in) (mm)	33-1/2 (851)	33-1/2 (851)	33-1/2 (851)
Interior Height (in) (mm)	25-1/2 (648)	25-1/2 (648)	25-1/2 (648)
Interior Width (in) (mm)	23 (584)	43-3/4 (1111)	55-7/8 (1419)
Interior Depth (in) (mm)	21-1/2 (546)	21-1/2 (546)	21-1/2 (546)
Overall Height (in) (mm)	35-7/8 (911)	35-7/8 (911)	35-7/8 (911)
Overall Width (in) (mm)	27-1/2 (699)	48-1/4 (1226)	60-3/8 (1534)
Overall Depth (in) (mm)	30 (762)	30 (762)	30 (762)
Gross Cubage (CuFt) (L)	6.0 (170)	11.4 (323)	14.6 (413)
Number of Shelves	1	2	2
Shelf Area (SqFt) (SqM)	3.4 (0.32)	6.5 (0.60)	8.3 (0.77)
Number of Casters	4	4	4
Condensing Unit Size	1/5 HP	1/2 HP	1/2 HP
Refrigerant	R290	R290	R290
Electrical Characteristics	115/60/1	115/60/1	115/60/1
Cord and Plug Furnished	Yes	Yes	Yes
NEMA Plug Configuration	5-15P	5-15P	5-15P
Total Amp Draw	3.5	7.5	7.5

Specifications subject to change without notice.

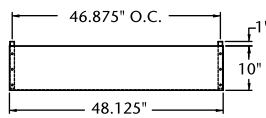
OPTIONAL OVERSHELF SPECIFICATIONS



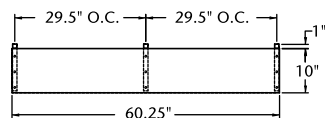
PLAN VIEW
MBUR/MBUF27



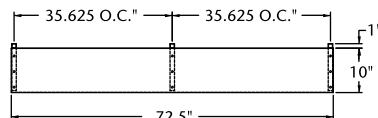
PLAN VIEW
MBUR36



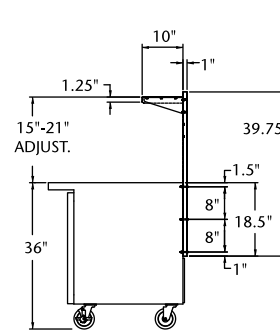
PLAN VIEW
MBUR/MBUF48



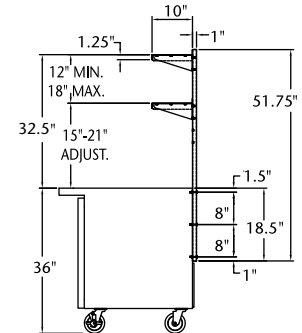
PLAN VIEW
MBUR/MBUF60



PLAN VIEW
MBUR72



SINGLE SHELF SIDE VIEW



DOUBLE SHELF SIDE VIEW

BID SPECIFICATIONS

Item no. MBU____. Provide _____
Undercounter/worktable refrigerator/
freezer(s), Master-Bilt® model no. MBU____.

Undercounter will feature a stainless
steel interior and exterior. Other standard
features will include adjustable heavy-duty
shelves (one per door), self-closing door with

recessed pocket handle and 6" overall height
casters.

The refrigeration system will be bottom
mounted and self-contained.

Refrigerant for all models will be R290. The
temperature range will be 34° to 38°F (1° to
3°C) for refrigerators and -10° to 0°F (-23° to

-17°C) for freezers.

Undercounter to have standard limited
three year parts and labor with additional
two year coverage on compressor part.

Undercounter to be UL & C-UL listed and
ETL Sanitation listed.

NOTE: Cabinet designed for optimum performance in air-conditioned area at 75°F ambient and 55% relative humidity.
All specifications subject to change without notice.

MASTER-BILT
Refrigeration Solutions

727 Second Street • Hudson, WI 54016
800-647-1284 • master-bilt.com

RSG
Refrigerated Solutions Group