

ITEM NO. \_\_\_\_\_  
 PROJECT \_\_\_\_\_  
 LOCATION \_\_\_\_\_  
 DATE \_\_\_\_\_ QTY. \_\_\_\_\_

## FUSION™ MBBC SERIES

### Deep Well Horizontal Bottle Coolers

#### MODELS

- MBBC50
- MBBC65
- MBBC80
- MBBC95



MBBC80



#### FEATURES

##### CONSTRUCTION

- Stainless steel top
- Black finish on front, sides and back
- Galvanized steel interior walls, stainless steel floor with drain
- Stainless steel lids
- Standard removable bottle opener/cap catcher
- Integrated glass rail on rear top
- Easy glide sliding lids with locks
- Door openings have plastic breaker strips to reduce condensation
- Adjustable product dividers
- Adjustable temperature control
- Foamed-in-place with low ODP polyurethane insulation
- Wall thickness: 1-1/2"

##### REFRIGERATION

- Self-contained refrigeration system metered by capillary tube
- Front breathing compressor on right side
- Evaporator coils are mounted to back wall and are epoxy-coated to resist corrosion
- Evaporator coils feature multiple fan motors and blades for greater air flow
- Automatic defrost
- Condensate evaporator inside compressor housing
- Access to slide-out condensing unit behind front grille for easy cleaning and service
- Refrigerant: R290
- Temperature range: 34° to 38°F (1° to 3°C)

##### WARRANTY

- Standard limited three year parts and labor
- Additional two year coverage on compressor part

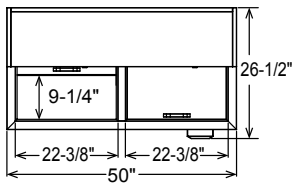
#### OPTIONS

- 4" plate casters

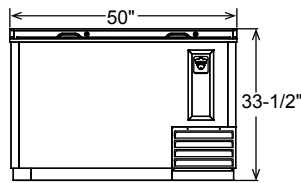
**TECHNICAL SPECIFICATIONS**

Models	MBBC50	MBBC65	MBBC80	MBBC95
Crated Weight (lbs) (kg)	214 (97)	251 (114)	298 (135)	335 (152)
Crated Height (in) (mm)	41 (1041)	41 (1041)	41 (1041)	41 (1041)
Crated Width (in) (mm)	53 (1346)	67 (1702)	83 (2108)	98 (2489)
Crated Depth (in) (mm)	30 (762)	30 (762)	30 (762)	30 (762)
Interior Height (in) (mm)	27-7/8 (708)	27-7/8 (708)	27-7/8 (708)	27-7/8 (708)
Interior Width (in) (mm)	46 (1168)	60-1/2 (1537)	76-1/2 (1943)	91 (2311)
Interior Depth (in) (mm)	22-3/4 (578)	22-3/4 (578)	22-3/4 (578)	22-3/4 (578)
Overall Height (in) (mm)	33-1/2 (851)	33-1/2 (851)	33-1/2 (851)	33-1/2 (851)
Overall Width (in) (mm)	50 (1270)	64-1/2 (1638)	80-1/2 (2045)	95 (2413)
Overall Depth (in) (mm)	28-1/2 (724)	28-1/2 (724)	28-1/2 (724)	28-1/2 (724)
Gross Cubage (CuFt) (L)	14.8 (419)	20.1 (569)	26 (736)	31.3 (886)
Number of Dividers	3	4	5	6
Condensing Unit Size	3/8 HP	3/8 HP	3/8 HP	3/8 HP
Refrigerant	R290	R290	R290	R290
Electrical Characteristics	115/60/1	115/60/1	115/60/1	115/60/1
Cord and Plug Furnished	Yes	Yes	Yes	Yes
NEMA Plug Configuration	5-15P	5-15P	5-15P	5-15P
Total Amp Draw	3.5	3.5	3.5	3.5
12 oz. Can Capacity	857	1191	1575	1893
12 oz. Bottle Capacity	377	539	715	877

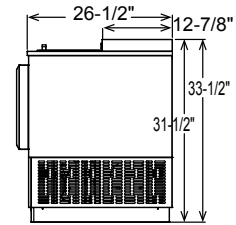
\*Floor drain connection exits the rear of the cabinet condensing unit compartment.



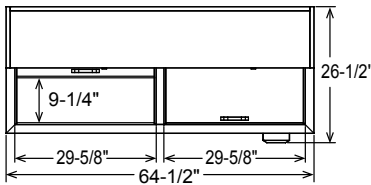
**MBBC50 PLAN VIEW**



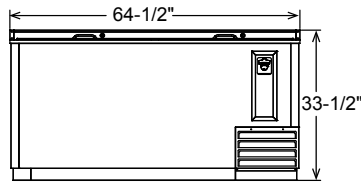
**MBBC50 ELEVATION VIEW**



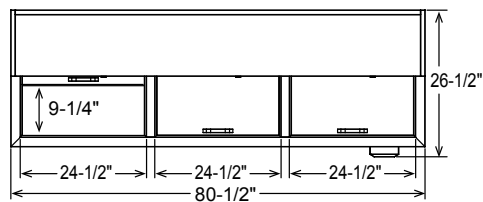
**ALL MODELS SIDE VIEW**



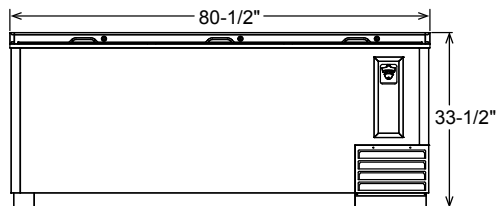
**MBBC65 PLAN VIEW**



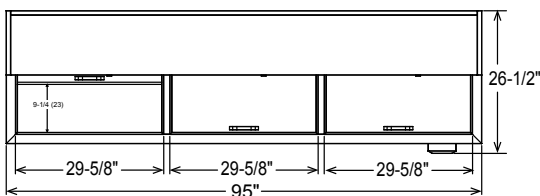
**MBBC65 ELEVATION VIEW**



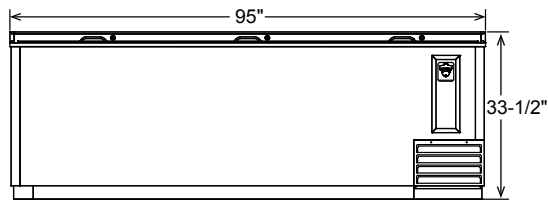
**MBBC80 PLAN VIEW**



**MBBC80 ELEVATION VIEW**



**MBBC95 PLAN VIEW**



**MBBC95 ELEVATION VIEW**

## LISTINGS



## HOOKUP

All models via plug in, 8 foot long flexible three wire 16 gauge cord with molded plug.



## BID SPECIFICATIONS

Item no. MBBC \_\_\_\_\_.

Provide \_\_\_\_\_ Deep Well Horizontal Bottle Cooler(s), Master-Bilt<sup>®</sup> model no. MBBC \_\_\_\_\_.

Bottle coolers will feature stainless steel top and black front, sides and back. Interior walls will be galvanized steel with stainless steel floor. Lids will be constructed of stainless steel and will be equipped with locks. Door

openings will have plastic breaker strips to reduce condensation. Adjustable dividers will also be standard.

The refrigeration system will be self-contained and use R290 refrigerant. The temperature range will be 34° to 38°F (1° to 3°C).

System will be equipped with coated evaporator coils and a

condensate evaporator. Condensing unit will be slide-out type for easy cleaning and service.

Bottle cooler to have standard limited 3-year parts and labor warranty with additional 2-year on compressor part.

Bottle cooler to be UL, C-UL and ETL Sanitation listed.

**NOTE: Cabinet designed for optimum performance in air-conditioned area at 75°F ambient and 55% relative humidity. All specifications within this publication subject to change without notice.**